

# Plants Toxic to Dogs

SPARKLE PAWS & GLITTER TRAILS

- **Syringa Berry Tree** (Melia Azederach)

- **Delicious Monsters**

- **Lily Family**

Examples of some of the really dangerous lilies: Tiger, Day, Asiatic Hybrid, Easter, Japanese Show, Rubrum, Stargazer, Red, Western and Wood lilies

- **Clivia Miniata**

- **Macadamia Nut**

- **Chinkerinchee** (Star of Bethlehem, Tjienkerintjee)

- **Onion**

- **Grass Seeds**

Certain grasses like Rooigras (Themeda triandra), Speargrass or Assegaaigras and Bur Bristlegrass (Setaria verticillata) have seeds that stick to and penetrate nose, eyes, eyelids, ears, gums or soft palate and even between the toes. Where it sticks to it swells and causes abscesses and sores

- **Oleander**

- **Cannabis sativa**

- **Sago Palm /Cycads**

- **Dogbane**

- **Foxglove**

- **Blue-green Algae**

- **Araceae Plants**

Philodendron, Pothos, Peace Lily, Calla Lily, Dumb Cane, Arrowhead Vine, Mother-in-law's Tongue, Sweetheart Vine, Devil's Ivy, and Umbrella Plant

- **Kalanchoe** (Devil's Backbone, Mother of Millions, Chandelier Plant)

- **Daffodils Bulbs**

- **Hyacinth Bulbs**

- **Tulip Bulbs**

- **Stinkblaar**

- **Duranta**

- **English Oak Tree**

- **Yesterday, Today and Tomorrow**

- **Dumb Cane**

- **Belhambra**

- **Yellow Jasmine**

- **Moonflower**

- **Elephant Ear**

- **Privet**

- **Aloe Vera**

- **Amaryllis**

- **Azalea**

- **Carnation**

- **Chrysanthemum**

- **Daisy**

- **Gladiola**

- **Hydrangea**

- **Ivy**

- **Milkweed**

- **Poinsettia**

- **Rhubarb**

- **Sweet Pea**

- **Tomato Plant**

- **Yarrow**

- **Yew**



# Plants Toxic to Cats

SPARKLE PAWS & GLITTER TRAILS

- **Syringa Berry Tree (Melia Azederach)**

- **Lily Family**

Cats are extremely sensitive to lilies. Small ingestions (such as 2 - 3 petals or leaves) – even the pollen or water from the vase – can result in severe, acute kidney failure.

Examples of some of really dangerous lilies: Tiger, Day, Asiatic Hybrid, Easter, Japanese Show, Rubrum, Stargazer, Red, Western and Wood Lilies.

- **Clivia Miniata**

- **Macadamia Nut**

- **Chinkerinchee (Star of Bethlehem, Tjienkerintjee)**

- **Onion**

- **Grass Seeds**

Certain grasses like Rooigras (Themeda triandra), Spear grass or Assegaaigras and Bur Bristle grass (Setaria verticillata) have seeds that stick to and penetrate nose, eyes, eyelids, ears, gums or soft palate and even between the toes. Where it sticks to it swells and causes abscesses and sores.

- **Oleander**

- **Cannabis sativa**

- **Sago Palm /Cycads**

- **Cardiac Glycosides**

Including: Dogbane, Foxglove, Milkweed, Lily of the Valley.

- **Plants from the Araceae family**

These include the Philodendron, Pothos, Peace Lily, Calla Lily, Dumb Cane, Arrowhead Vine, Mother-in-law's Tongue, Sweetheart Vine, Devil's Ivy and Umbrella Plant.

- **Kalanchoe** (Devil's Backbone, Mother of Millions, Chandelier Plant)

- **Corn plant** (Dragon Tree)

- **Stinkblaar**

- **Duranta**

- **English Oak Tree**

- **Yesterday, Today and Tomorrow**

- **Dumb Cane**

- **Belhambra**

- **Yellow Jasmine**

- **Moonflower**

- **Elephant Ear**

- **Privet**

- **Daffodils**

- **Creepers**

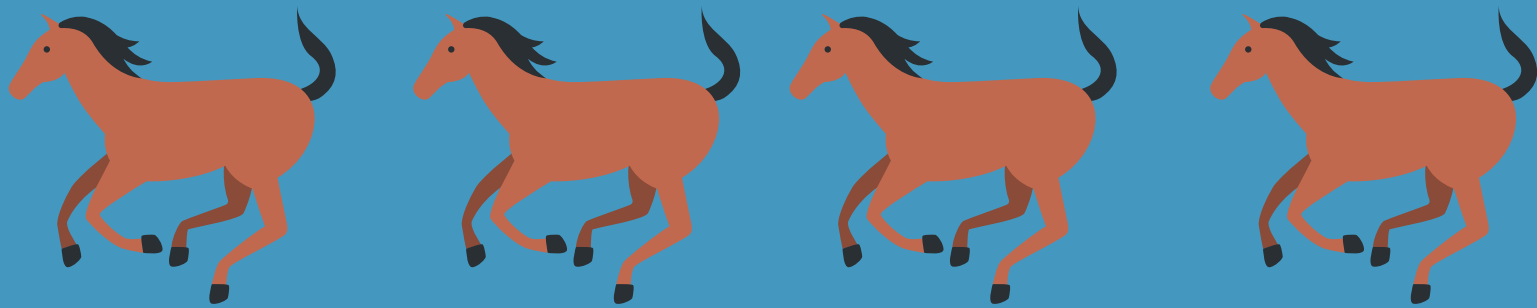
- **Spinach**

- **Agaves**

- **Tea Leaves**

- **Rhubarb**

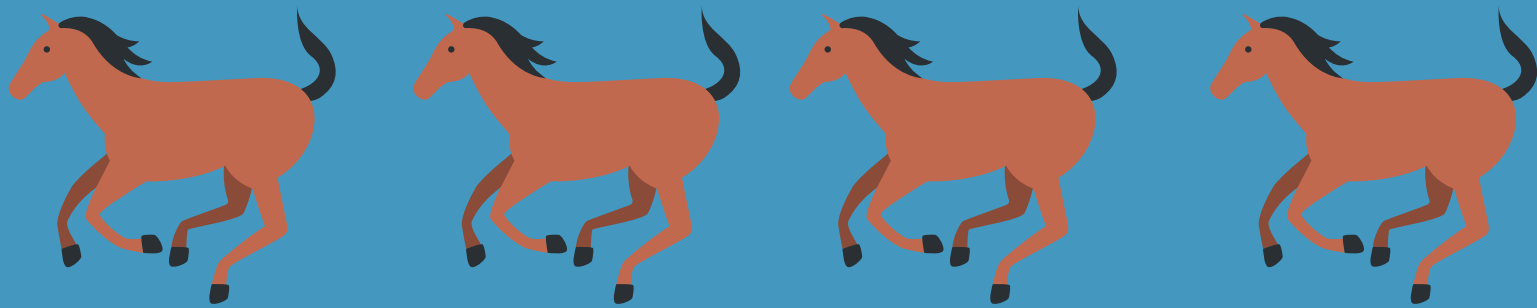
- **Dracaena Plants**



# Plants Toxic to Horses

SPARKLE PAWS & GLITTER TRAILS

- Chilli Peppers
- Millet (Grain Sorghum)
- Castor Oil Plant
- Wild Lucerne
- St John's Wort - Hypericum
- Poison Onion
- Wild Cucumber
- Cotton
- Absinthe
- Quinine
- Coca Plant
- Tobacco
- Poppy (Opium)
- "CHRISTMAS PLANTS"  
Holly, Mistletoe, Poinsettia, Hydrangea  
(Krismis Roos)
- Arum Lilies
- Azalea
- Buttercup
- Foxglove
- Chrysanthemum (Pyrethrum)
- Moonflower (Angels Trumpet)
- Hyacinth
- Iris
- Flame Lily
- Blue Lupin
- Amaryllis
- Periwinkle
- March Lily
- Deadly Nightshade - Belladonna
- Tulips
- Morning Glory
- Delphinium (Butterfly)
- Cyclamen
- Geel Suring (Yellow Sorrel)
- Wild Everlasting (Sewe Jaartjie)
- Yellow Tulip
- Horse Tail
- Vuursiektebos
- Purple Weed - Paterson's Curse
- Ragwort
- Thorn Apple
- Milkweed (Melkbos, Tonelbos)
- Devil's Thorn (Duiweltjie)
- Cocklebur (Kankerroos)
- Dronkgras (Staggersgrass)
- Kraalbos
- Perdebos
- Bushman's Poison Bulb (Gifbol)
- Bushman's Poison Bush (Arrow Poison)
- Wild Almond
- Prickly Poppy
- Pigweed
- Lucky Bean Tree
- Acorns from Oak Tree
- Silly Oak (Protea)
- Tamboti Tree
- Syringa
- Seringboom
- Giant Wattle
- Wonderboom
- Candelabra Tree (Succulent)
- Corral Tree
- Sasbanis
- Wondervyboom
- Paperbarkthorn
- Tung Oil Tree
- Elephant Ear
- Pigs Ear
- Bracken Fern
- Blister Bush
- Verbena (Lavental)

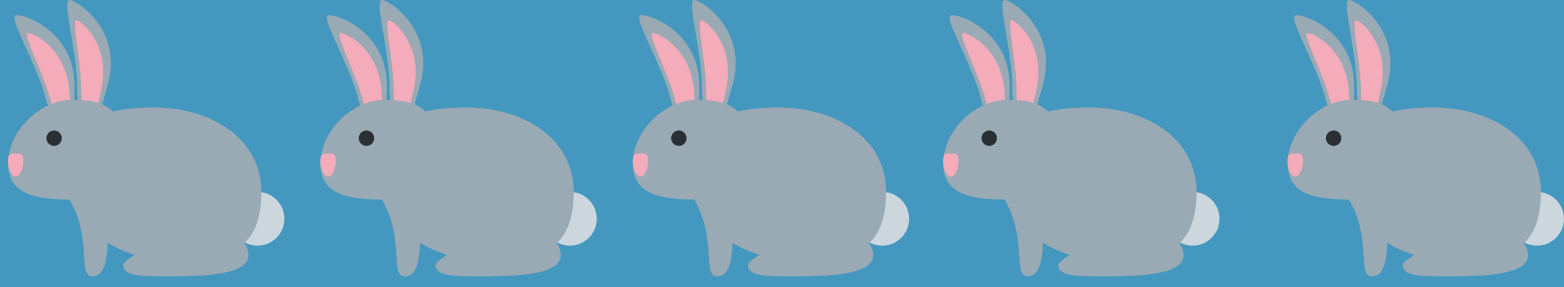


# Plants Toxic to Horses

SPARKLE PAWS & GLITTER TRAILS

- Cycads (Broodboom)
- Bitterbos
- Inkberry
- Oleander
- Magnolia
- Jerusalem Cherry
- Cherry Laurel
- Yesterday, Today and Tomorrow (Brunsfelsia)
- Aster (Daisy Type)
- Red Hot Cats Tail
- Kandelaarsbos (Krimpsiektebos)
- Passiflora
- Bobbejaang
- Poison Ivy
- Kruidjie-Roer-My-Nie
- Ganskweek (Looks Like Daisy)
- Hemlock
- Dieffenbachia
- Spotted Cane
- Yew
- Privet
- Bougainvillea
- Jasmine
- Ivy
- Melktoe
- Lantana (Wilderoosmaryn)
- Bobbejaantou
- Dawidjiewortel

[www.sparkleellie.com](http://www.sparkleellie.com)



# Plants Toxic to Rabbits

SPARKLE PAWS & GLITTER TRAILS

- Primrose
- Foxglove
- Cherry
- Aloe
- Almond
- Begonia
- Daffodil
- Caladium
- Apricot
- Anemone
- Nightshade
- Lupin
- Aconitum
- Mock Orange (Philadelphus)
- Hemlock
- Water Hemlock
- Yew
- Primula
- Horse Chestnut
- Ivy
- Wild Parsnip
- Buttercup
- Oxalis
- Mistletoe
- Creeper
- Azalea
- Cineraria
- Juniper
- Lily Family
- Box
- Snowdrop
- Lily of the Valley
- Wood Anemone
- Vinca Spp/Periwinkle
- Celandine

[www.sparkleellie.com](http://www.sparkleellie.com)